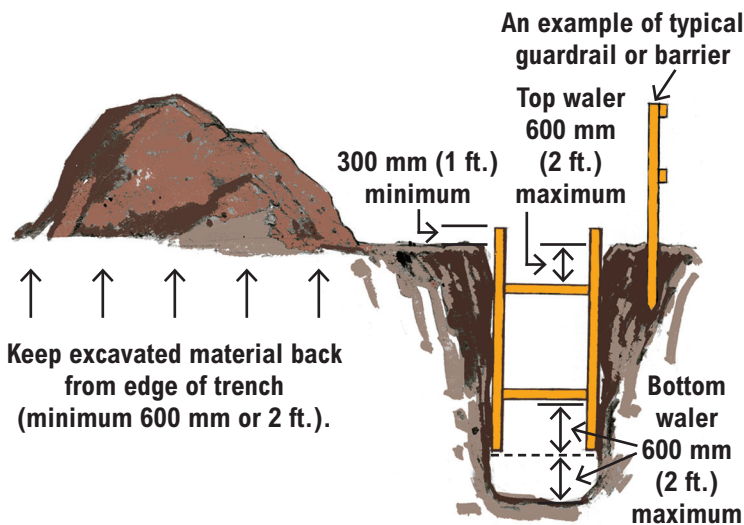


## Additional excavation requirements

- Excavation slopes and/or supporting systems must be inspected daily for erosion or deterioration.
- Excavated material must be kept back at least 600 mm (2 ft.) from the edge of any trench excavation and 1.2 m (4 ft.) from any other excavation.
- Trees, utility poles, rocks, and similar objects next to an area being excavated must be removed or secured if they could endanger a worker.
- When necessary, excavations must be covered, or substantial guardrails or barriers must be erected around excavations to prevent workers or other persons from falling into them.

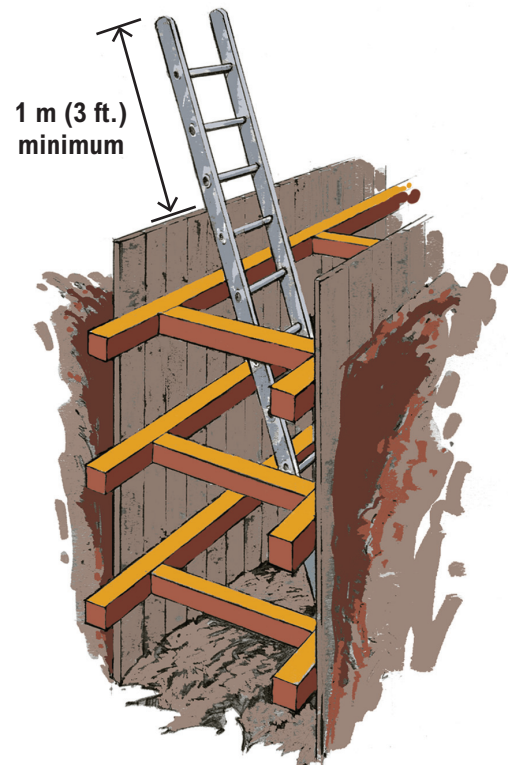


*Vertical supports must extend above the ground level a minimum of 300 mm (1 ft.) and must be no more than 600 mm (2 ft.) up from the bottom of the trench.*

*The top waler must be set at 600 mm (2 ft.) down from ground level.*

*The bottom waler must be set at 600 mm (2 ft.) up from the bottom of the vertical support.*

- A ladder must be provided when workers are required to enter excavations more than 1.2 m (4 ft.) deep. The ladder must extend from the bottom of the excavation to at least 1 m (3 ft.) above ground level and be placed so that it is protected by the shoring.



*This is an example of ladder use in an excavation over 1.2 m (4 ft.) deep.*

Project: \_\_\_\_\_ Address: \_\_\_\_\_

Employer: \_\_\_\_\_ Supervisor: \_\_\_\_\_

Date: \_\_\_\_\_ Time: \_\_\_\_\_ Shift: \_\_\_\_\_

Number in crew: \_\_\_\_\_ Number attending: \_\_\_\_\_

**Other safety issues or suggestions made by crew members:**

---

---

---

---

---

---

**Record of those attending:**

Name: (please print)	Signature:	Company:
1.		
2.		
3.		
4.		
5.		
6.		
7.		
8.		
9.		
10.		
11.		
12.		
13.		
14.		
15.		

Manager's remarks: \_\_\_\_\_

---

Manager: \_\_\_\_\_ Supervisor: \_\_\_\_\_

*(signature)*

*(signature)*



WORKING TO MAKE A DIFFERENCE  
worksafebc.com